



Sin
SOCIETÀ ITALIANA DI NEUROLOGIA

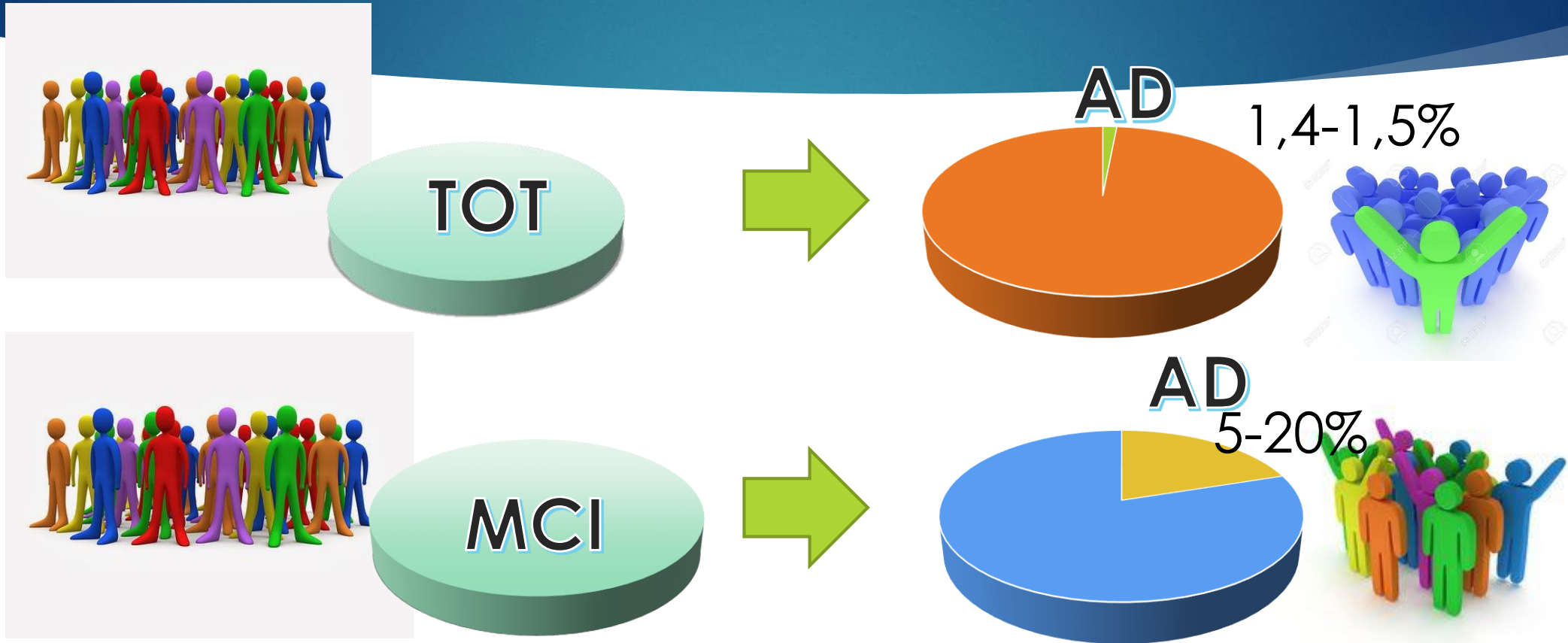


Mild Cognitive Impairment e rischio di conversione in demenza

Dr. Giovanna Viticchi
Clinica di Neurologia
Ancona

Perugia, 7 dicembre 2016

Mild Cognitive Impairment

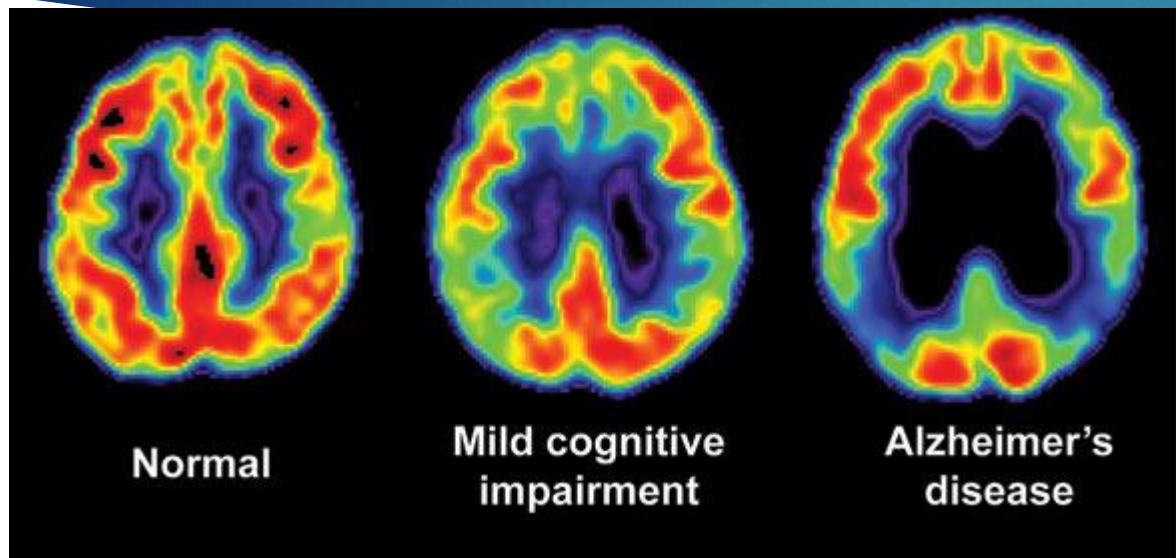


...slight cognitive alterations not interfering with patients' ability to maintain their autonomy in daily living..

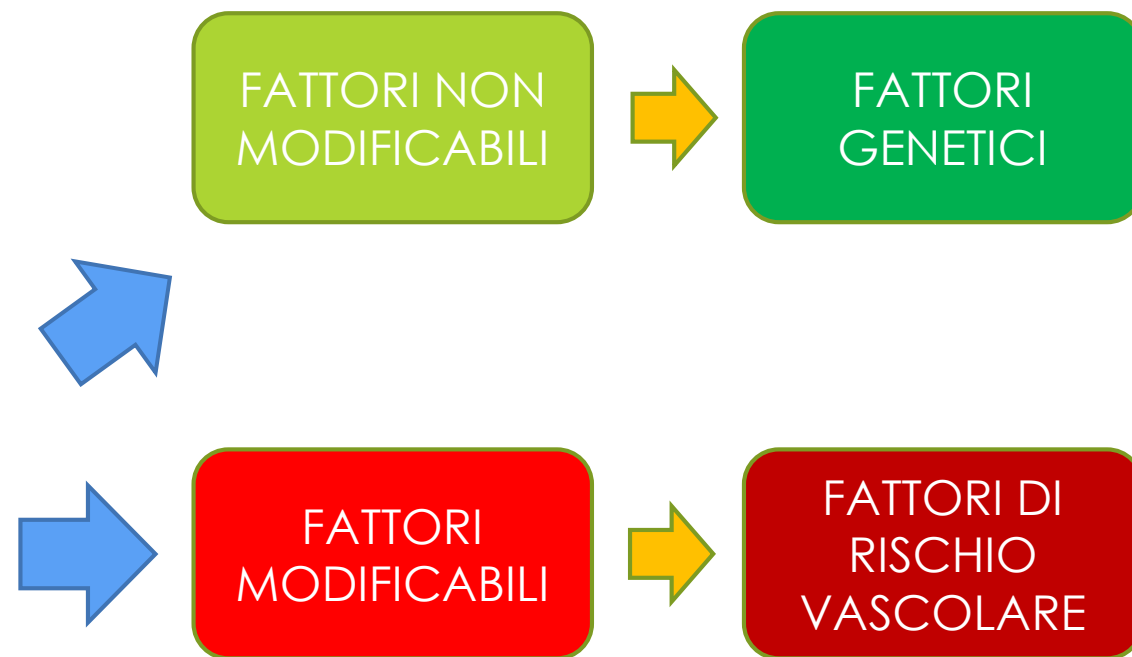
Albert 2011

Albert 2011
Langa 2014

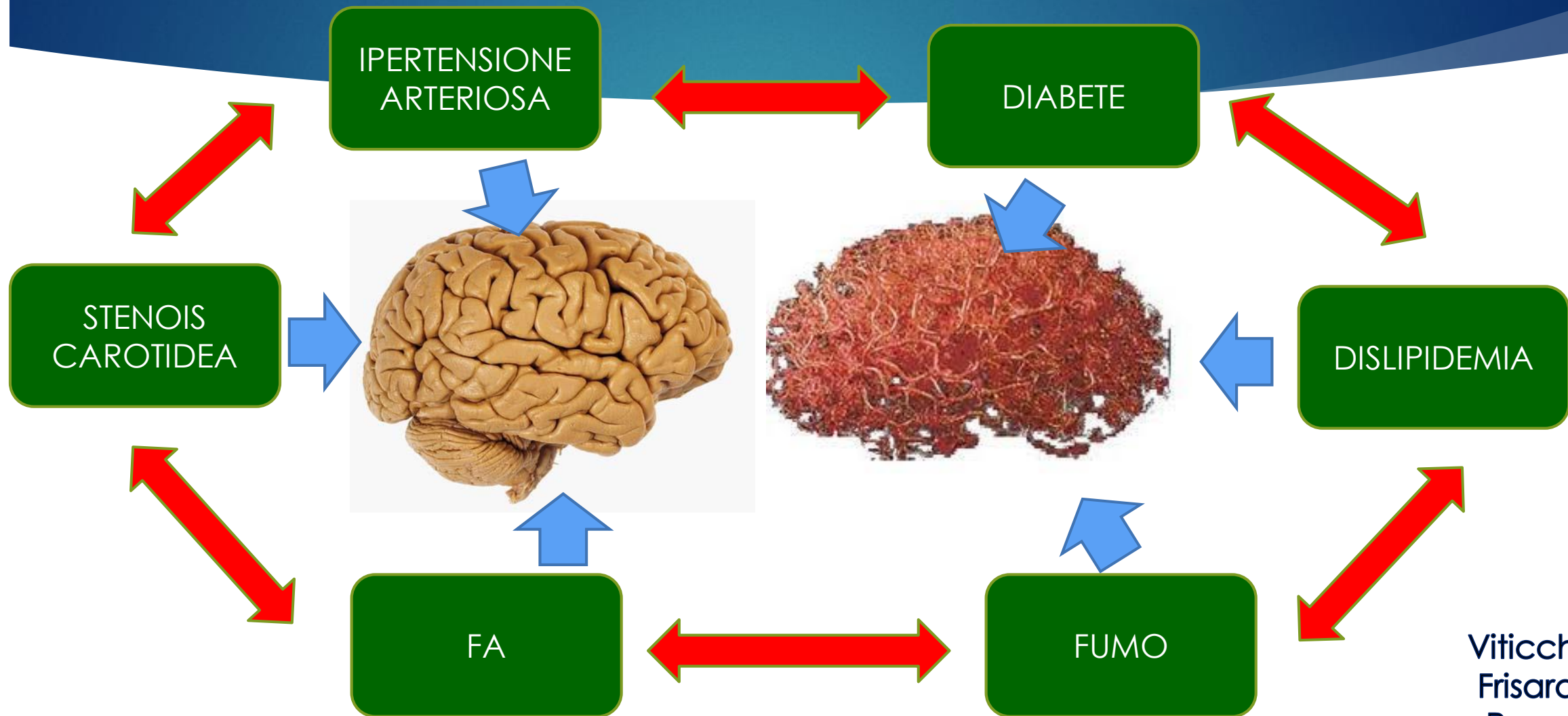
Mild Cognitive Impairment



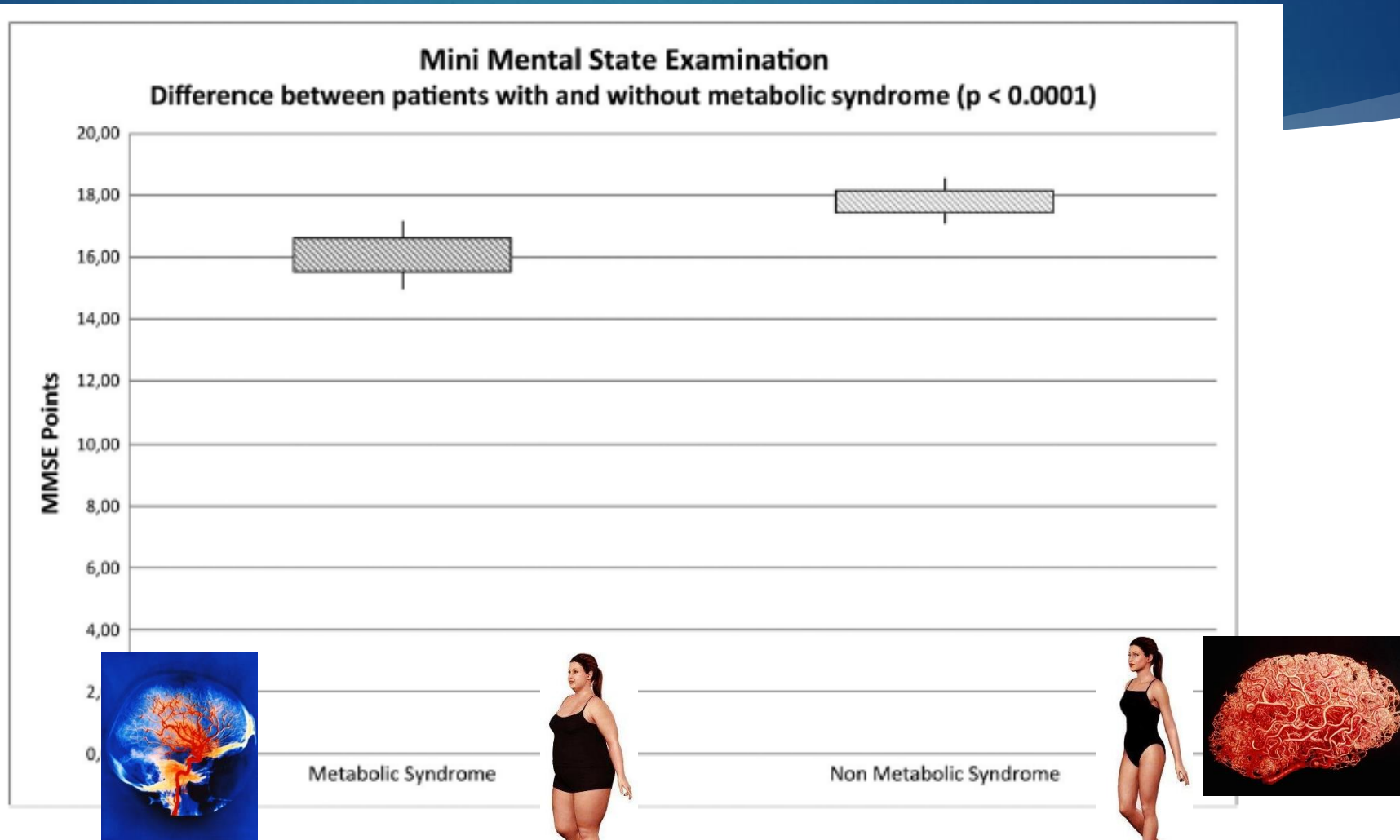
PRE-DEMENZA



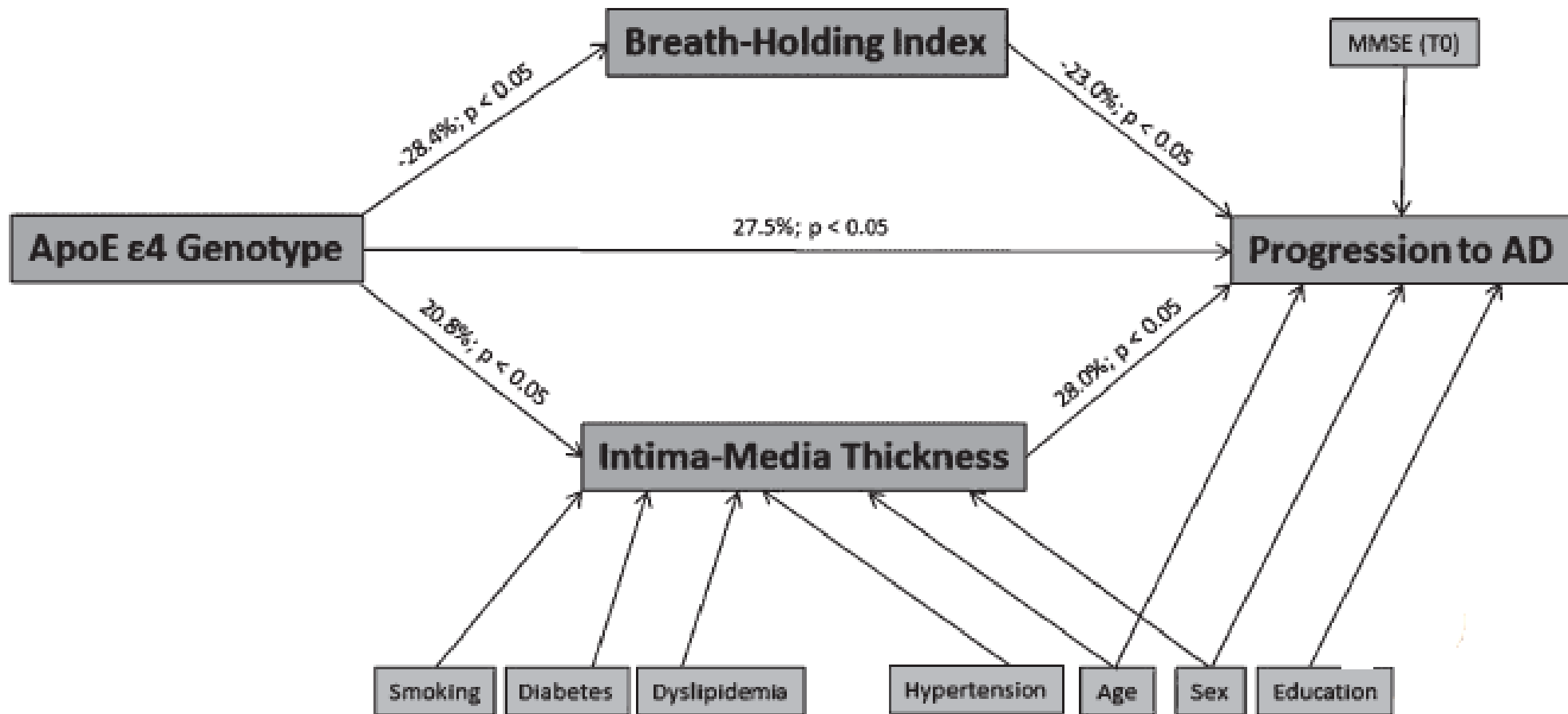
FATTORI DI RISCHIO VASCOLARE



CLUSTER DI FATTORI DI RISCHIO VASCOLARE

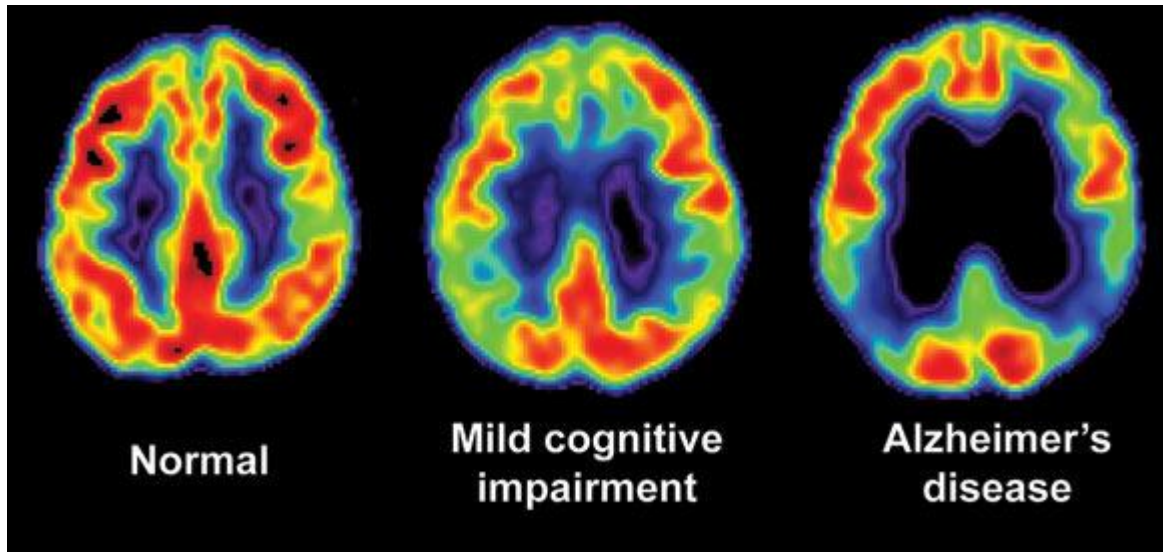


CLUSTER DI FATTORI DI RISCHIO VASCOLARE



Disegno dello Studio

OBIETTIVO: ricercare uno strumento capace di predire la progressione da MCI a AD



Framingham cardiovascular risk profile (FCRP)

A composite measure of general cardiovascular risk, currently used to predict the risk of acute vascular events in a 10-year period

Disegno dello Studio

VISITA
GENERALE E
NEUROLOGICA



**SOGGETTI
MCI**

BATTERIA
NEUROPSI
COLOGICA

APO E

FCRP

IMAGING
CEREBRALE

FOLLOW-UP
24 MESI



BATTERIA
NEUROPSICOLOGICA

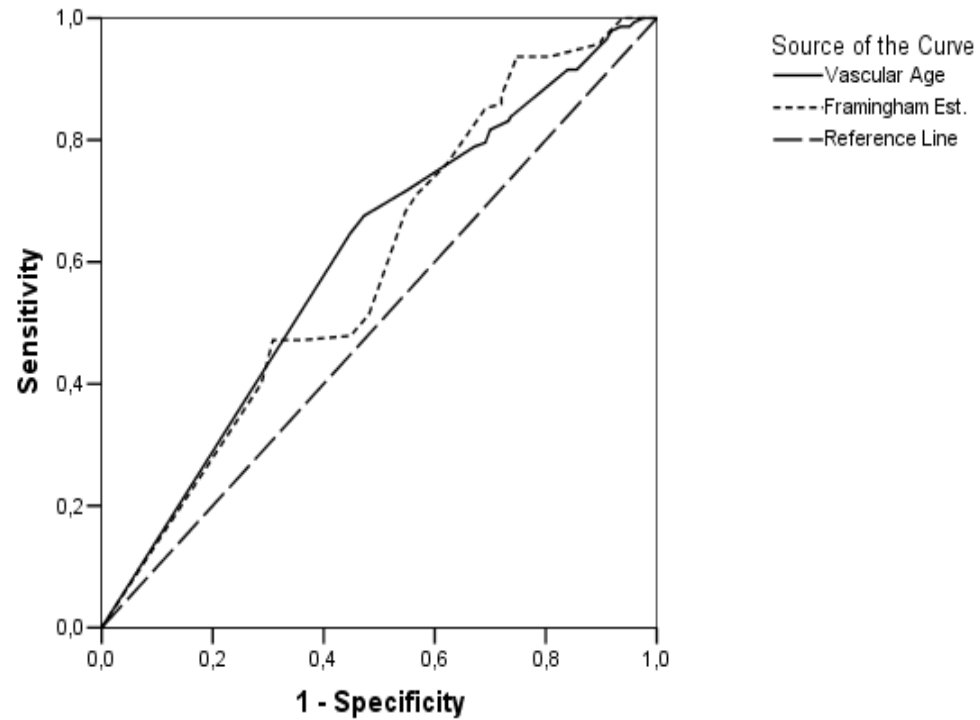
AD?

Caratteristiche Epidemiologiche

Caratteristiche epidemiologiche	
Numerosità (n)	385
Numero sogg. evoluti AD (n, %)	142 (36.9%)
Ètà (\pm SD), anni	72.29 (\pm 7.79)
Genere M (n, %)	195 (50.6%)
Scolarità (\pm SD), anni	8,03 (\pm 4.32)
<i>Suddivisione popolazione in base FCRP</i>	
Low Framingham Risk Score (n, %)	72 (18.7%)
Intermediate Framingham Risk Score (n, %)	72 (18.7%)
High Framingham Risk Score (n, %)	212 (62.6%)

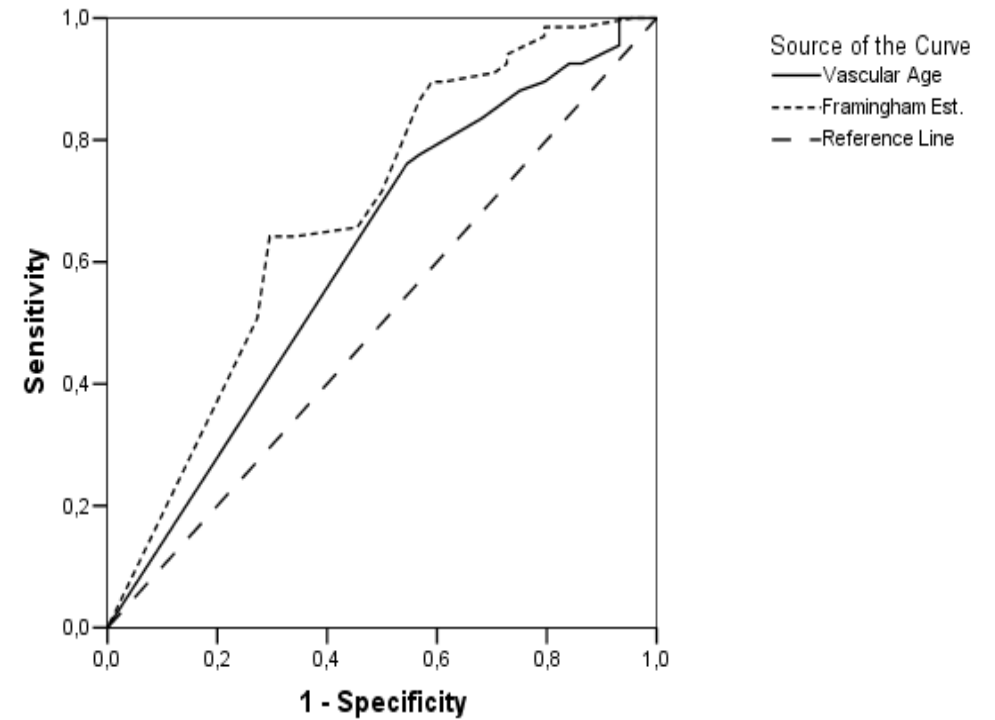
Risultati

ROC Curve (complete sample)
Framingham Estimated Risk Profile and Vascular Age



Diagonal segments are produced by ties.

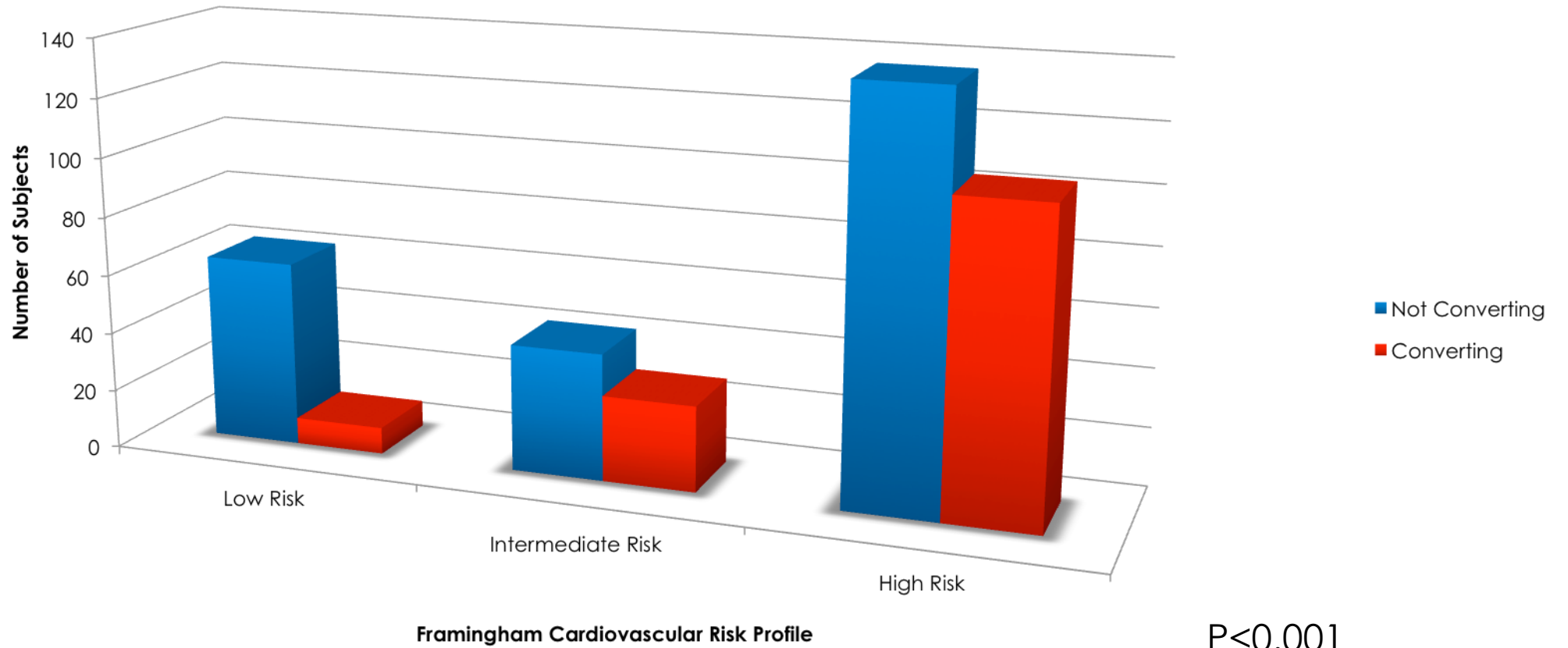
ROC Curve (ApoE e4 carriers)
Framingham Estimated Risk Profile and Vascular Age



Diagonal segments are produced by ties.

Risultati

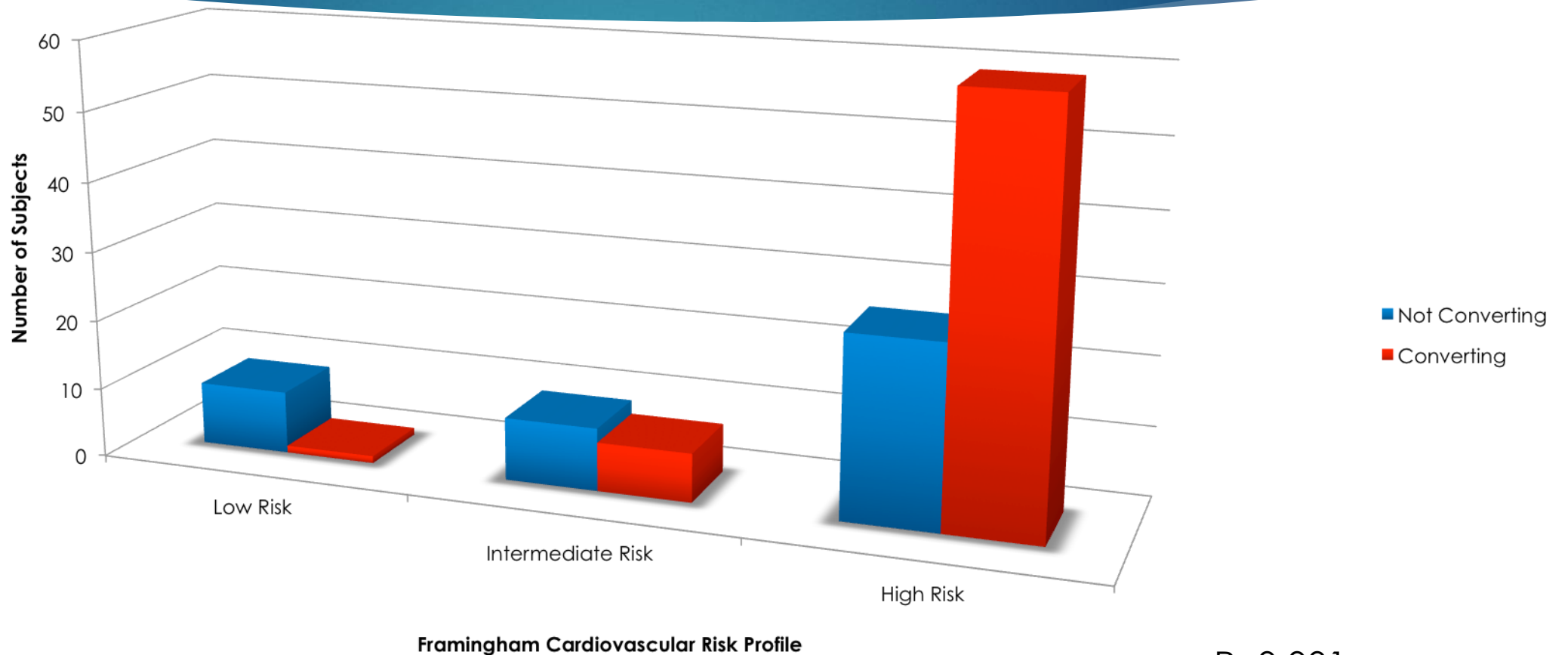
Subjects with mild cognitive impairment (all sample)
Converting to AD in 24 months



P<0.001

Risultati

Subjects with mild cognitive impairment (ApoE e4 carriers)
Converting to AD in 24 months



P<0.001

Conclusioni

Il **Framingham cardiovascular risk profile (FCRP)** può essere considerato un valido ausilio nella predizione della probabilità di convertire da MCI a AD.

La componente genetica, rappresentata dalla presenza dell'**allele ApoE ε4** conferma la sua rilevanza aumentando significativamente il rischio di conversione ad AD.

Con una migliore individuazione delle sottopopolazioni di pazienti maggiormente a rischio è auspicabile che in futuro sarà possibile migliorare il management di malattia e cercare di ritardare e/o impedire la comparsa di demenza

A photograph of a historic Italian square, likely Piazza del Campidoglio in Rome. In the center is the Palazzo Senatorio, a large, light-colored building with a prominent dome. In the foreground, there is a stone fountain with several water spouts. The square is flanked by tall, multi-story buildings with many windows. The sky is blue with some white clouds. The text "GRAZIE DELL'ATTENZIONE" is overlaid in a bold, yellow, stylized font across the middle of the image. There are also decorative blue and green geometric shapes in the corners of the image.

GRAZIE DELL'ATTENZIONE